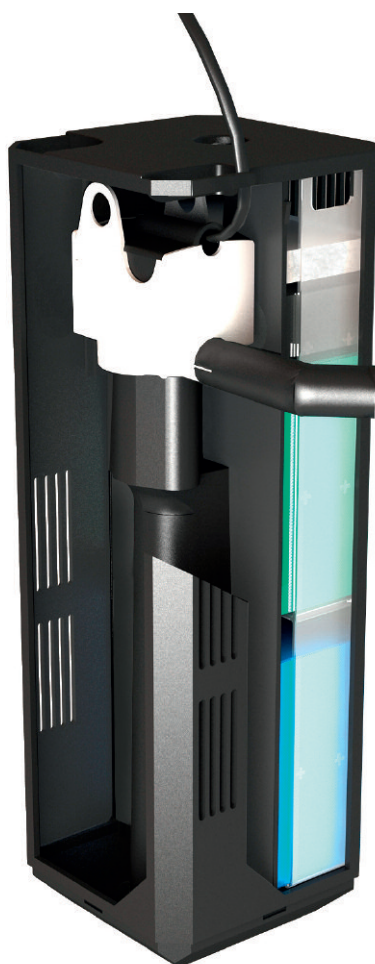


Instruction Manual

Filter System Bioflow Super




Introduction


Thank you for choosing a JUWEL Aquarium product.


Our products represent over 40 years experience in the manufacturing of aquariums and their accessories applying the most modern production techniques in bringing together the JUWEL Aquarium system, which is both easy to use and simple to maintain.

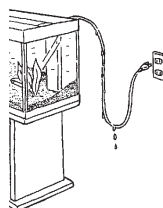
Safety instructions:

This appliance is not intended for use by persons (including children) with reduced physical, sensory or mental capabilities, or lack of experience and knowledge, unless they have been given supervision or instruction concerning use of the appliance by a person responsible for their safety. Children should be supervised to ensure that they do not play with the appliance.

 Always unplug all immersed electrical equipment from mains before placing your hands into the water.

 Operation with the RC circuit breaker only, max. 30mA.

 The power plugs of the electrical devices must not become moist. Connect the power plugs to the power supply at such a height that the connection cable forms a loop which would enable the water to drip down.

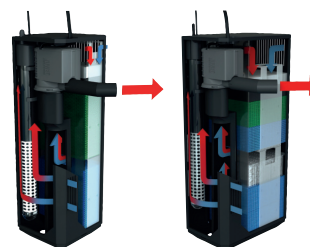


The JUWEL filter system Bioflow

The JUWEL filter system Bioflow is a highly effective biological filter system with two stages that includes components complementing each other in an ideal manner. Installing the filter in the aquarium makes hose connections unnecessary and prevents leaks. The pump output is not negatively affected by hose couplings, intake tubes etc. The capacity of the pump is designed in such a manner that an ideal level of biological filtering is ensured by a sufficient level of percolation through the filter material.

In that context, the large filter volume ensures excellent mechanical filtering and facilitates long cleaning intervals.

The construction of the filter system enables you to quickly access the individual heater, pump, and filter media components. This way, the filter system may comfortably be operated during cleaning and while performing maintenance work.



Bioflow Super

Bioflow 3.0
Bioflow 6.0
Bioflow 8.0

Pre-Filter Wool Pad (white)

The white filter wool acts as a mechanical pre-filter, removing large particles of dirt and excess food which in turn ensures that the other sponges do not get clogged.

Active Carbon Sponge (black)

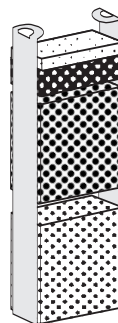
The black activated carbon sponge sits on top of the blue coarse filter sponges, and removes chemical impurities from the water, which cannot be removed biologically.

Nitrate Removal Sponge (green)

The Sponge contains micro-organisms, which will, once developed, reside inside the sponges and in the water. These micro-organisms feed of nitrates and will reduce them significantly. The JUWEL Filtration system provides the optimum housing for these micro-organisms.

Filter Sponge Fine (blue)

The fine blue sponge and the bacteria cultures living in them, clean the water of even the smallest impurities. As the sponge has a very fine structure the water will flow through it even slower, allowing the bacteria even more time to perform their function.



Installation of the JUWEL Filter System in your Aquarium

The JUWEL Filter has been designed for installation in the right hand corner of the aquarium.

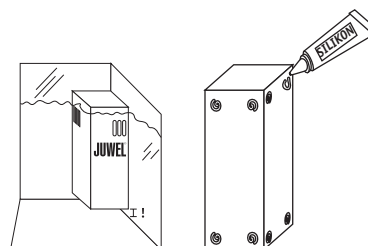
First of all, please remove all internal components of the Filter System leaving you with the empty filter housing.

In order to ensure that the Filter System is securely fastened to the glass panels, we have included a tube of special JUWEL Aquarium silicon. Apply the silicone onto the housing as shown in the picture, on both the side and the rear walls.

Your Aquarium should be empty or as near as empty, allowing you to wipe the glass dry.

Position the filter housing in the aquarium in such a way that the top of the filter housing rises 1 cm above the maximum water level of your aquarium.

Press the housing onto the glass panels firmly, and hold it for a few minutes. Allow the silicone to dry out for at least 24 hours.



Getting Started - The JUWEL filter system Bioflow Super

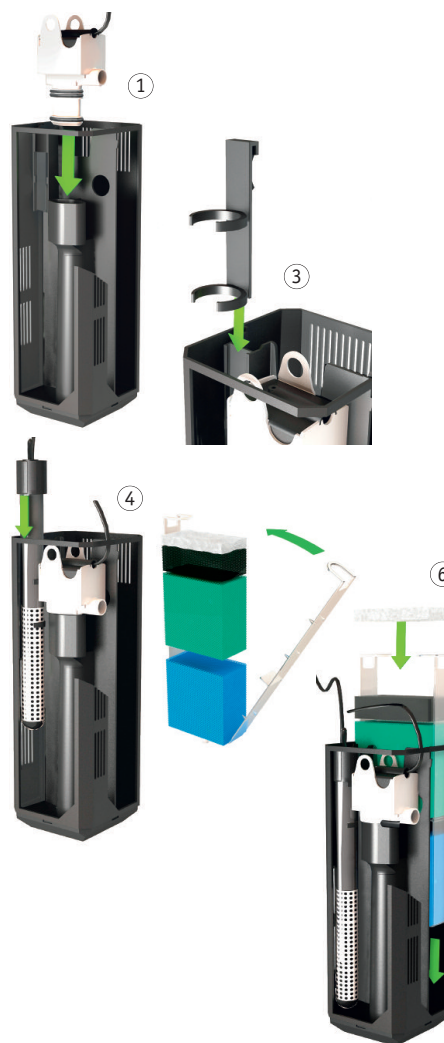
You should prepare the filter for operation prior to setting up the aquarium. However, do not yet connect the electrical components to the power supply.

Please observe the following notes regarding commissioning the JUWEL filter system Bioflow Super:

The JUWEL filter system Bioflow Super consists of:

- 1 heater
- 1 heater holder
- 1 pump
- 1 white filter wool
- 1 carbon sponge, packaged
- 1 green nitrate remover sponge, packaged
- 1 blue filter sponge fine

1. Insert the base of the pump into the pump holder of the filter and firmly push it into position. In that context, the pump outlet faces in the direction of the nozzle opening. Confirm the proper arrangement of the gasket in the nozzle opening (it is used to minimize the transmission of vibrations).
2. Carefully attach the nozzle from the outside through the opening to the pump outlet and ensure its firm connection.
3. Insert the heater mount into the guide rail of the filter divider.
4. Insert the heater from above into the heater holder.
5. Now start preparing the filter sponges by removing the plastic packaging from the carbon sponge and the nitrate remover sponge. Thoroughly rinse the blue filter sponge only under running water.
6. After that, insert the blue filter sponge, the nitrate remover sponge, the carbon sponge and the filter wool on top into the filter basket and push it into the filter housing.
7. Place the filter cover on the filter housing.
8. The JUWEL filter system Bioflow Super is now ready for operation.



The JUWEL Aquarium Filter System is a biological filter system. For it to work effectively, bacteria cultures will need to grow inside the blue sponges. This process can take up 6-8 weeks for the filter to fully mature. Consequently we recommend to decorate and plant the aquarium and add just a few (3-5) hardy fish in order to help the maturation process. Please test the water on a weekly basis to monitor the water conditions and once the water is safe you can begin to add more fish.

Care and Maintenance of the JUWEL Filter System Bioflow Super

Care and maintenance of the JUWEL Filter System Bioflow Super is very easy and requires little time indeed, if you observe the following recommendations carefully:

- Replace the white pre-filter wool once a week. This will prevent dirt particles clogging the important blue sponges and having a negative effect on the important biological cultures.

- Replace the black carbon sponge every 4 weeks.

The black active carbon sponge removes chemical impurities and prevents these substances affecting the bacteria cultures inside the filter sponges. As with any active carbon sponge the absorption of these chemicals will only be effective for a defined period of time. Thereafter, the carbon will release the substances gradually back into the water. This is why we recommend changing these every 4 weeks.

- Replacing the white pre-filter wool and black carbon sponge as above ensures that the maintenance of the blue sponges is kept to a minimum. The biological system takes care of most of the work for you and we therefore suggest that you clean or replace these sponges every 3-6 months respectively. It is important to note that only one sponge should ever be cleaned or replaced at a time ensuring that a good supply of bacteria is available to maintain the aquarium's biological balance. Any cleaning or replacement destroys these good bacteria and they will need 10-14 days to recolonise the new sponges.

- In order to allow a proper level of micro-organisms in the filtration system it is recommended to exchange the sponge every 6 weeks. The nitrate removal sponge contains bacteria, which will after a while reduce the nitrate level in the aquarium significantly.

Important:

Always use original JUWEL Aquarium filter media to ensure the optimum performance of your system.

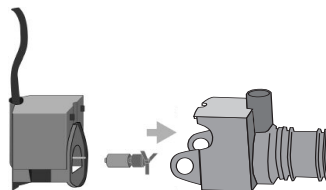


Maintaining the JUWEL Pump Bioflow

The JUWEL aquarium pump requires little maintenance. Regardless, you should confirm the functionality at regular intervals.

Please perform the following steps in order to test and maintain the pump:

1. Disconnect the pump and the heater from the power supply.
2. Remove the nozzles.
3. Remove the pump from the pump holder of the filter.
4. Remove the pump housing from the motor and remove the impeller.
5. Thoroughly clean all parts and particularly check the impeller for signs of wear at the magnet.
6. After that, please reinstall the pump in reverse order in the filter.



Recommendation:

In order to ensure that the power head operates at its optimum and maintains its low noise level, we recommend to check and potentially replace the parts subject to wear and tear, such as the impeller regularly.

All spare parts are available from your local JUWEL Aquarium retailer.

Safety instructions:

Never operate the power head out of water.

Always unplug the power head from the power supply before removing it from the filter.

The power head is intended for indoor use and for use in fluids up to 35°C.

Never repair the electrical cord or plug. In case of damage replace the complete power head.



Proper disposal (electrical waste)

The labelling on the product or on the accompanying literature declares that it must not be disposed of, at the end of its service life, together with household rubbish. Please dispose of this equipment separately from other waste, to protect the environment or public health from damage by unregulated waste disposal. Recycle the equipment and support the sustained recycling of material resources.

Private users should contact the dealer who sold them the product or the responsible authorities, for a demonstration on how to recycle the equipment in an environmentally friendly way.

Guarantee

We guarantee the performance of the JUWEL-Aquarium product or its accessories to the purchaser for a period of 24 months from the date of purchase according to the following conditions:

§ 1 Extent of the guarantee

(1) This guarantee extends to the JUWEL-Aquarium product and its components excluding items subject to wear and tear such as light tubes and filter media. It is limited to the product as such and does not cover damage to other property and/or individuals. In addition, the provisions of the product liability law apply. These provisions are not limited by the aforementioned arrangement.

(2) It is the prerogative of JUWEL-Aquarium to decide whether the guarantee is performed by means of repair or replacement. If neither repair nor replacement can ensure the performance of the JUWEL-Aquarium product the purchaser is entitled to demand a reduction in price or to return the product against repayment of the purchase price.

§ 2 Guarantee period and settlement procedure

(1) The guarantee period begins on the day of the purchase of the product from the retailer. Claims under this guarantee will not be honoured, if

- (a) the damage is caused as a result of improper use or maintenance or non-observance of the instructions given in this manual
- (b) the product or its components have been maintained by persons or companies not authorised by the manufacturer to do so
- (c) the product or its components have been damaged by mechanical means of whatsoever kind, in particular broken glass

(2) All claims under this guarantee have to be notified to the retailer, from whom the aquarium has been purchased without delay, however, not longer than 2 weeks from the day of first occurrence of defects. Rights under the consumer protection laws will remain unaffected.

(3) Guarantee claims will only be accepted if the validity of the claim is supported by evidence of purchase of the JUWEL-Aquarium product.

This declaration of guarantee is a translation only. In case of doubts the original German language version prevails.

We reserve the right to make technical alterations.

© JUWEL AQUARIUM

© JUWEL, Trigon, Vision, Rekord, Rio, Lido, Vio, Korall, Monolux, Duolux, Multilux, Korallux, Violux, High-Lite, Warm-Lite, Colour-Lite, Day-Lite, Juwel Twin-Lite, Juwel Ecoflow, Bioflow, Cirax, Nitrax.